

K70

All-in-1 All Fiber OTDR



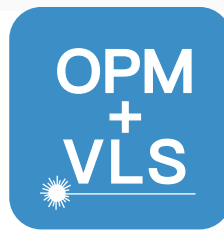
Large Screen
7 inch GUI



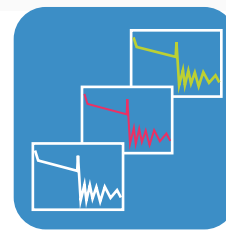
Dead Zone
0.5m



High Dynamic
Range Up to 42dB



Built-in
OPM & VLS



ALL-in-1
850~1625nm

Support four interface fiber types



ST



FC



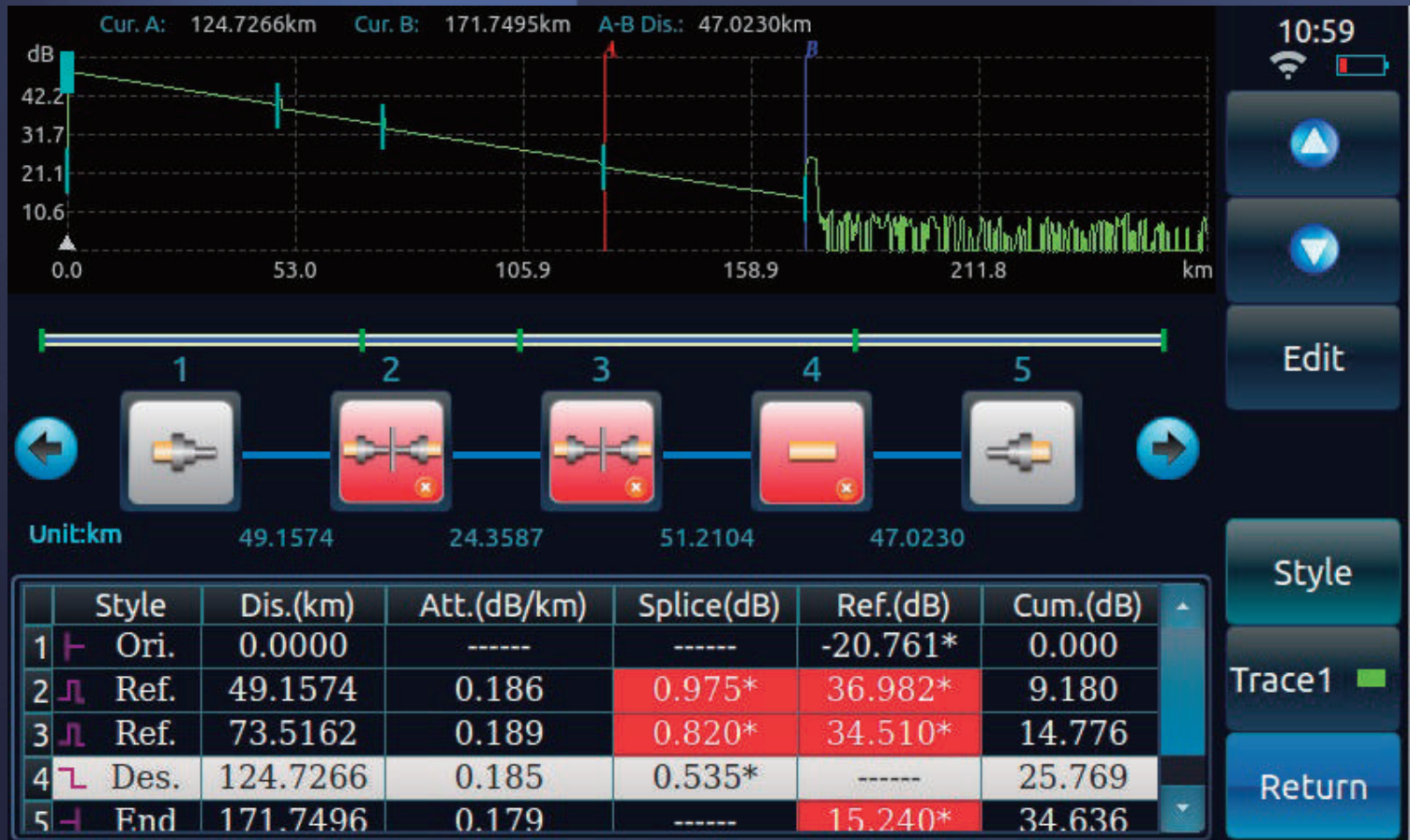
SC



LC

Smart Link Map

Using the new LinkMap with Pass/Fail option, users can easily identify, locate and characterize connectors, splices, splitters, macrobends and fiber ends.



Color touch screen

Touch and key make operation more varied. To satisfy different people's habits and improve their work efficiency.





8 hours



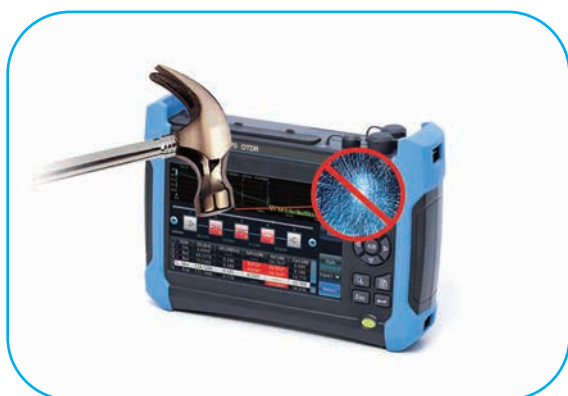
6800mAh



recycled



Product features



Shock resistant



Water resistant



Drop resistant



Dust resistant

PRODUCT SPECIFICATION:

Model	K70-S	K70-P	K70-MS
Wavelength Dynamic Range	1310/1550nm 32/30dB	1310/1550/1625nm 32/30/28dB	850/1300+1310/1550nm 24/28dB 32/30dB
Event dead zone(m)	0.5		
Attenuation dead zone(m)	3		
Ranging accuracy	$\pm(0.75 + \text{sample interval} + 0.0025\% \times \text{range})$ (excluding the refractivity placement error) (m)		
Ranging resolution	0.05, 0.1, 0.2, 0.5, 1, 2, 4, 8, 16 and 32m		
Test range	0.4, 0.8, 1.6, 3.2, 6.4, 16, 32, 64, 128, 256 and 512km (mono-mode); 0.4, 0.8, 1.6, 3.2, 6.4, 16 and 32km (850nm multi-mode)		
Testing PW	3, 5, 10, 30, 80, 160, 320, 640, 1280, 5120, 10240 and 20480ns 3, 5, 10, 30, 80, 160, 320, 640 and 1280ns(850nm multi-mode)		
Maximum number of sampling points	256k		
Loss resolution	0.001dB		
Refractivity setting range	1.00000 ~ 1.99999(step: 0.00001)		
Range unit	km, m, thousand feet, feet		
Display	800×480, 7-inch TFT color LCD (a capacitive touch screen in the standard configuration, and a resistive touch screen optional)		
Optical output interface	FC/UPC + LC/UPC + SC/UPC , ST/UPC optional)		
Language	English		
External interfaces	USB, Micro-USB, 10M/100M Ethernet, earphone and Micro SD		
Power supply	AC/DC adapter: AC100V~240V, 50/60Hz and 1.5A DC: 17V±3V(2A) Internal Li battery: 11.1V, 6800mAh, battery operating time: 8h		
Built-in Power Meter	-70~+10dBm		
Built-in Visual Fault Locator	650nm / 10mW		
Weight/Dimensions	About 1.8kg / 52mm(W)×180mm (H)×55mm (D)		
Environmental adaptability	Operating temperature: -10℃~+50℃ (battery charging: 5℃~40℃) Storage temperature: -40℃~+70℃ (battery: -20℃~60℃) RH: 5% ~95%, no condensation		

CONFIGURATION LIST:



CONTACT US:

OrientTEK Optical Technology Ltd

HEAD OFFICE:

Jianshan Industry Park, Liuhe District,
Nanjing, Jiangsu, China

TEL: (+86) 25 8687 0598

FAX: (+86) 25 8687 0598

www.orientekot.com

sales@orientekot.com

Export Control Regulations

The products and/or technical information presented in this publication may be subject to the application of the Foreign Exchange and Foreign Trade Act and other related laws and regulations in China.

In addition, the Export Administration Regulations (EAR) of the United States may be applicable.

In cases where exporting or reexporting the products and/or technical information presented in this publication, customers are requested to follow the necessary procedures at their own responsibility and cost. Please contact the Ministry of Economy, Trade and Industry of China or the Department of Commerce of the United States for details about procedures.